

CORPORATE PROFILE



SA FIRE WATCH
Fire and Safety Compliance

INDEX

Pg3	Introduction
Pg4	Our Commitment
Pg5	Our Vision & Values
Pg6	Sustainability Vision
Pg7	Environmental Goals
Pg8	HR Development
Pg9-12	Team of Experts
Pg13-29	Products & Services
Pg30	Green Action
Pg31	Corporate Social Responsibility
Pg32	Accreditations
Pg33-35	Projects Experience





A Brief Introduction

S.A. FIREWATCH (PTY) LTD is a family owned and managed company, with a team of trained specialist personnel fully committed to the fire and safety requirements of the commercial, maritime, residential and industrial sectors.





Our Commitment to Customer Satisfaction

We aim to provide customers with a superior customer experience. It begins with the development of high-quality products and continues with support services that exceed customer expectations. Our customer service promise is simple: To make the world safer, one person at a time.

Integrated Technology

The end user experience drives our technology and security services. Our design is coordinated with the supporting MEPF disciplines, yielding a safe environment and a seamless result.





Our Vision

Our vision is to be the leading provider of safety solutions that protect workers when life is on the line. We pursue this vision with an unsurpassed commitment to integrity, customer service, and product innovation that creates exceptional value for all S.A.Fire Watch stakeholders.

Our Values

We are committed to protecting the health and safety of our clients. We are, quite simply, an organization built on integrity.





Our Sustainability Vision

SA Fire Watch is dedicated to environmental improvements that promotes a sustainable future. Using environmentally friendly products is a key priority for us. We ensure that the fire equipment we install are sustainable to the environment and issue our clients with eco-friendly options when it comes to fire compliance.

We aim to create cleaner and safer communities in which we live. Together, we can make a difference for future generations by engaging in responsible environmental practices. It is possible to protect lives and assets, while also caring for the environment and a sustainable future.



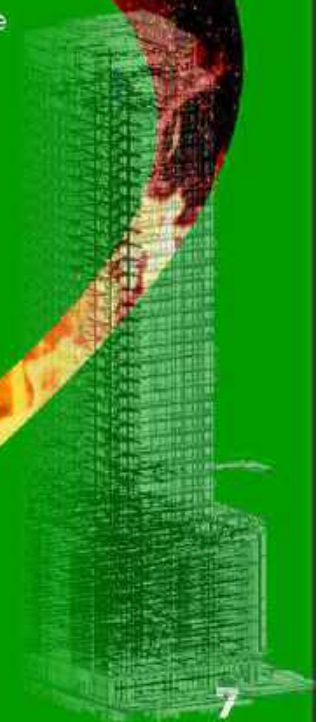


Our Environmental Goals

SA Fire Watch is undertaking an Environmental Impact Assessment to ensure that all parts of our operations do not negatively impact Key Biodiversity Areas (KBA's)

SA Fire Watch provides you with sound inputs on water management and water use for sustainability. Thus we aim to increase in more environmental fire safety and compliance installations to cut down on water as the primary source of fire safety.

This is also due to the fact that a fire requires fuel, oxygen and heat. The active here being oxygen, other environmentally friendly agents have been acquired over the past 4 four years to be a better alternative to water in safer buildings and protecting lives as far as fire safety is concerned.





HR DEVELOPMENT

STAFF TRAINING

SA Fire Watch invests significantly in staff training in occupational health and safety to all employees. Our staff is generously supported in attending industry related business clinics SA Fire Watch has 97% retention in staff measured over the last five years.

Our staff are annually awarded with different service certificate together with motivational cash bonuses in recognition of their work and years served.

COMMUNICATION

SA Fire Watch has a defined business structure which encourages open communication between all levels of staff, from field technician to our Director. We believe this leads to open and honest communication between all staff service delivery through shared knowledge and experience.

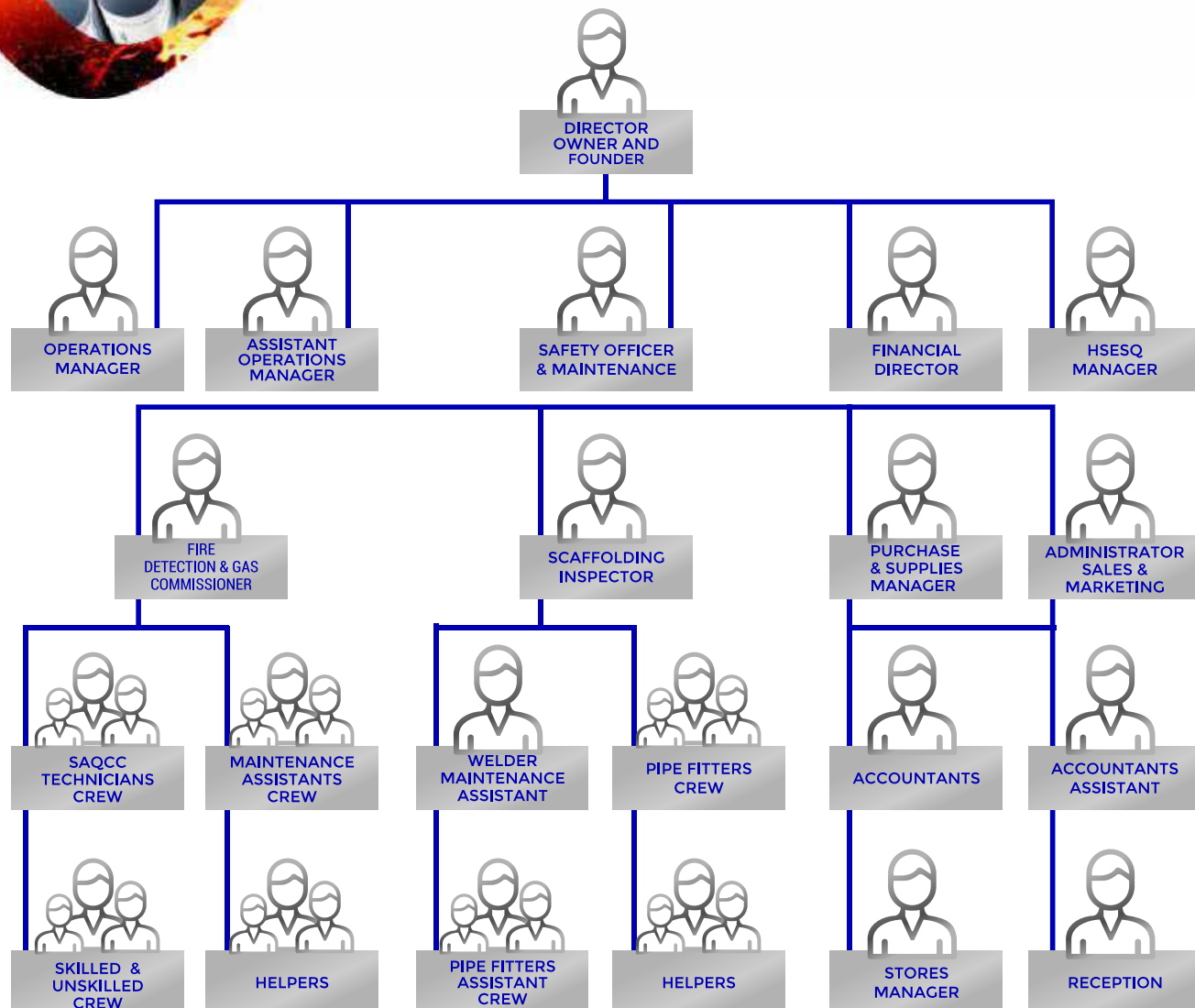


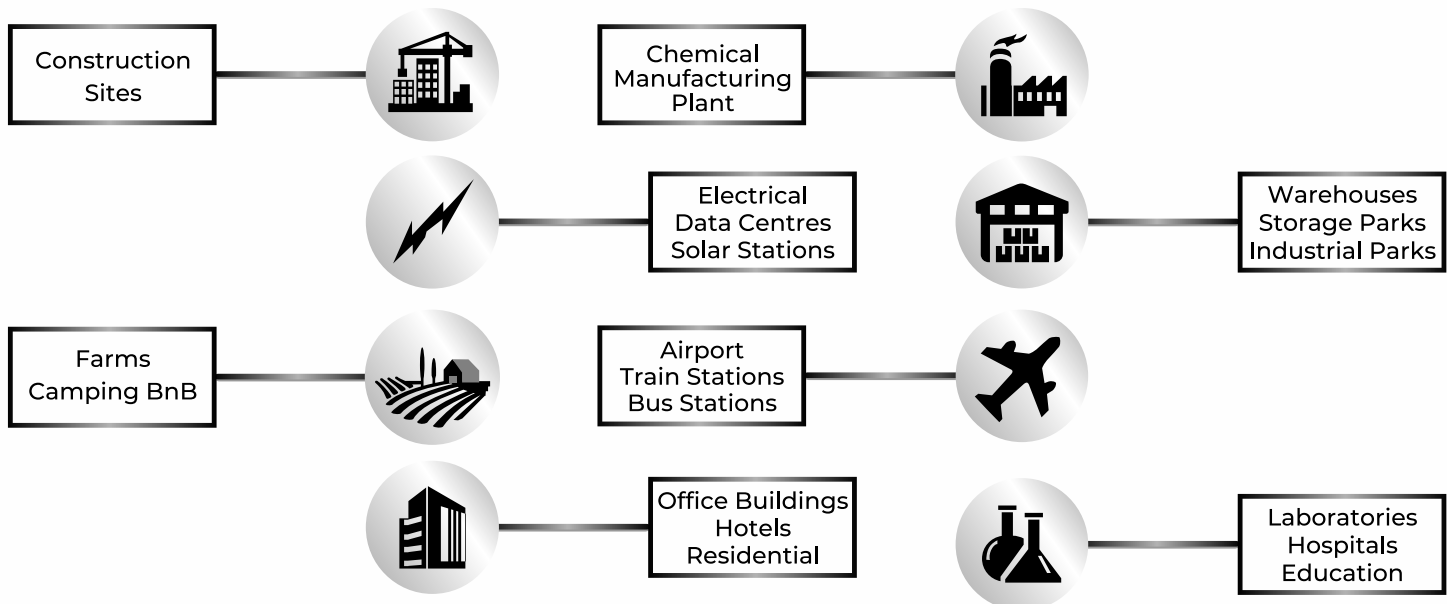


OUR TEAM OF EXPERTS

Design, Fabricate,
Install, Commission,
Service and Test a
complete range of
Fire Protection
Systems
including:

- ON SITE FIRE WATCH
- FIRE COMPLIANCY
- FIRE DETECTION SYSTEMS
- FIRE SPRINKLER SYSTEMS INSTALLATION
- PRE-ENGINEERED GAS FIRE SUPPRESSION SYSTEMS INSTALLATION
- FIRE EXTINGUISHER INSTALLATION, SERVICING AND SUPPLY
- EVACUATION EQUIPMENT
- AVD LITH-EX EXTINGUISHERS
- CCTV (Closed-Circuit Television)
- ALARM SYSTEMS
- ACCESS CONTROL SYSTEMS
- HOSE REEL INSTALLATION, SERVICING AND SUPPLY
- FIRE HYDRANTS INSTALLATION, SERVICING AND SUPPLY
- EVACUATION PLANS
- EMERGENCY EVACUATION SIMULATION REPORTS
- EMERGENCY EQUIPMENT NEEDS ANALYSIS
- EMERGENCY & EXIT LIGHTING
- EVACUATION TRAINING
- FIRE TRAINING





Our Team of Experts

Commercial, Construction, Industrial and Residential

We install fire systems as per fire plans approved by fire department and designed by an accredited Fire Engineer, duly registered with relevant accreditation authority.

If you are a busy building manager, building owner or body corporate member, hassles with fire protection and compliance are the last thing you need from overwhelming local authority fire departments. Let SA Fire Watch manage your fire safety needs.





OUR TEAM OF EXPERTS

Mechanical, Electrical, Plumbing and Fire (MEPF) Engineering

**Our practices ensure the
smallest carbon footprint.**

MECHANICAL

At S.A. Fire Watch, we continually seek innovative solutions to provide the appropriate level of environmental control while at the same time optimizing occupant safety, minimizing energy consumption, and ensuring a safe and controlled environment. Our primary goals for sustainability and longevity of the building systems are minimizing energy consumption, maximizing the ease of service and maintenance, and to simplify operations.

- Heating, Ventilating, and Air-Conditioning Systems (HVAC)
- HVAC Control/Building Automation Systems
- Process Dehumidification Systems
- Fire, Life Safety systems
- Smoke Management Systems
- Complete HVAC ducts, pipes, etc.

ELECTRICAL

Twenty-first century electrical systems are advancing at an equal pace to other building components. While the fundamental objective is to provide secure and optimal system performance, the increasing sophistication and complexity of buildings have become further dependent on energy conscious electrical systems for environment control. By incorporating all aspects of planning and design, our electrical engineers are skilled in ensuring an electrical system that increases productivity and reliability.

- Fire Alarm Systems
- Emergency Lighting and signage
- Way Finding system
- Fire detection and alarm
- Security and Access Control systems
- CCTV



OUR TEAM OF EXPERTS

Mechanical, Electrical, Plumbing and Fire (MEPF) Engineering

**Whether it's Fire Protection,
HVAC, Lighting Design,
Plumbing, or Building
Occupancy Compliancy**



PLUMBING

Plumbing systems are often the unseen essential elements of a building's use. But even with essential systems, we are mindful to the needs of future generations. Our plumbing professionals unite necessity with pioneering by generating thorough, comprehensive, and efficient systems.

- Potable Water storage & Pumps
- Complete Pipe and Valves
- Water Tanks systems



FIRE PROTECTION

Fire protection systems are a fundamental part of overall building design and function. Knowing their potential inherent complexity is why our seasoned fire protection engineers lead the multi-discipline, code driven, and coordinated effort reducing potential risk and incorporating safeguards.

- Fire Detection
- Fire Suppression
- Smoke Mitigation & Control
- Fire Protection Infrastructure & Standpipes
- Fire Sprinkler System
- Virtual Assistant Fire Sprinkler System
- Fire Stand Pipe System (Wet & Dry)
- Fire Hose Reel & Extinguisher Requirements
- Gas Suppression System
- Fire Water Storage Tank & Pumps
- Fire Hydrant Requirements

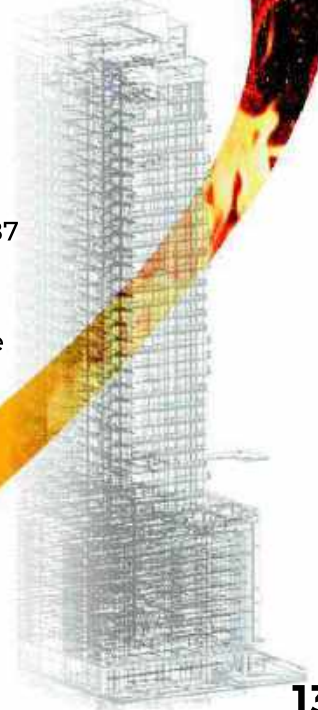


Products and Services

S.A.FIRE WATCH PTY LTD can supply and install a range of equipment and replacement units which are approved according to the South African National Standards(SANS) and SABS.

Installation and Maintenance

Our fabrication team can handle the full range of pipe sizes from 25mm right upto 200mm and beyond. With round the clock manufacturing capability. S.A. Fire Watch guarantees on-time delivery of fabrication regardless of size and complexity. Workmanship is guaranteed and all works in accordance with SANS 10287 or ASIB requirements. Our digital monitoring and notification software for fire sprinklers is installed at site on installation of fire sprinklers. Allowing for a Real-Time monitoring and notification fire sprinklers system thereby creating timely maintenance and detection.





Fire Hose Reels

Fire Hose Reels are designed to provide a large, continuous, controlled volume of water to fight Class 'A' fires.

The 30 meter long hose enables the user to combat fires in a variety of locations on site and from a safe distance with its long water jet.

With the addition of a foam branch a hose reel may be used to fight sizable fires. SA Fire Watch supply, install and maintain Fire Hose Reels in accordance to statutory requirements.





Safety Symbolic Signs

We stock a large inventory of SANS 1186-1&5 fire and safety signs to suit all applications.

Whether it is mandatory, regulatory, hazard identification or fire related sign, we can supply a variety of sizes and material types.

Should you require a one-off custom sign, these can also be arranged.





Fire Hydrants

Fire hydrants are installed on properties to enable the attending fire services to commence an initial attack to limit the spread of fire. Protect adjacent property and extinguish the fire. Properly trained personnel can also utilise these installations to extinguish fires at various locations on site.

Regular maintenance and testing of fire hydrants, booster connections and associated pump sets is imperative to ensure compliance





Water Fire Sprinklers

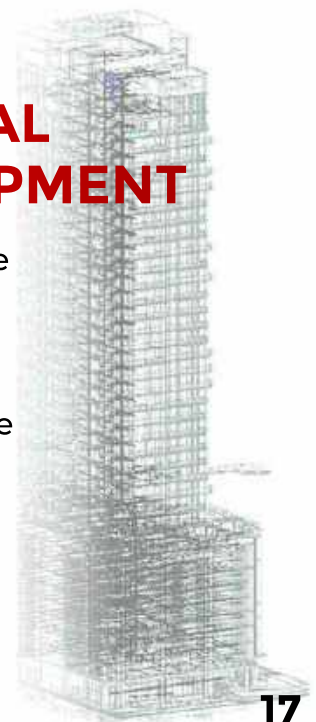
The sprinklers piping is constantly filled with water and controlled by a valve that opens when the sprinkler has reached a certain temperature and forces the water to flow in that direction. This will, in turn, sound the alarm via the sprinkler gong, indicating a potential fire.

Automatic Fire Sprinklers are designed to contain a fire in the ignition area. Sprinkler heads are strategically placed to spray water automatically to prevent the fire from spreading.



FORESEE EVENTUAL DAMAGE ON EQUIPMENT

- Intelligent 24/7 real-time remote sprinkler monitoring system.
- Customizable single installation to maximize security
- Identify equipment issues before breakdown and repair
- Patched to pumps, butterfly valves, pipes, doors..
- Increase building safety
- Connects to your existing fire sprinkler system
- Avoid false fire alarms

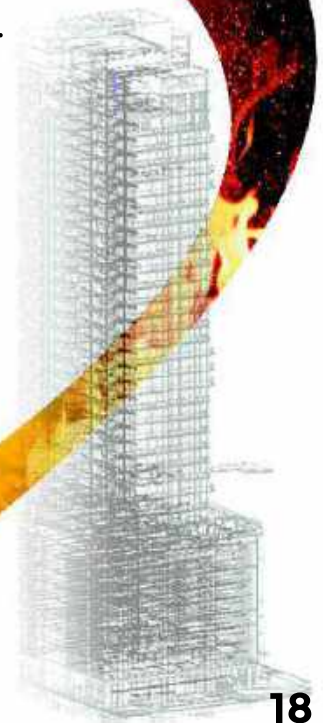




Gas Fire Suppression

Gas suppression system is a pre-engineered fire protection system to combat Class A, B and C fires. The cylinders are connected with selector valves. Gas is only released in the zone where the fire is situated.

Gas is stored in 200 bar and 300 bar. Mounting is done via nomadic tubing. Installed together with over pressure vent to prevent turbulence damage in the room. Nozzles range from 3 - 25,5mm.





Fire Extinguishers

We stock a large inventory and variety of SABS approved fire extinguishers and cabinets.

This range from wall mounted to mobile trolley.

Our fire extinguishers are water and chemical based depending on your nature of your business, property and or facility.





AVD Lith-Ex Extinguishers

AVD high performance Lith-Ex extinguishers are designed to target high risk fires of a limited size and lithium-ion battery fires. Suitable for confined spaces. AVD is applied in the form of a mist.

S.A. Fire Watch supply to homes, hotel rooms, vehicles, public transport, aviation, marine and leisure. It is a revolutionary fire extinguisher dedicated to processes where fires need to be suppressed in their infancy before developing into a fully established fire.





Fire Detection

S.A. Fire Watch SABS approved fire detection systems. Smoke detectors are installed on roof ceilings to identify smoke and fire in its infancy.

This can be connected to a fire panel which then releases a sound alarm, We have a sound alarm and a combined sound and strobe alarms depending on your requirements.

The fire panel can also identify the exact location of the fire. We have a different types and sizes of fire panels, fire alarms and sound alarms.

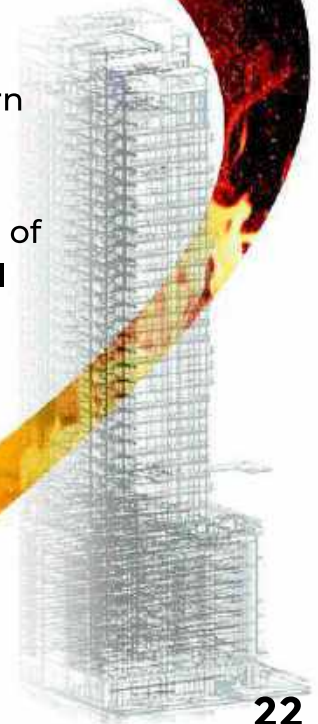




Fire Training

It is imperative for any organization to have personnel who have knowledge of using the fire equipment installed. Professionals appreciate a risk free environment. Severe injuries can become a concern and cause for further investigation.

Basic knowledge of first aid skills before the arrival of the Emergency Medical Services and Occupational Safety gives advantage to absolute standard and certification that will satisfy all organizations.





Emergency Standby Services

S.A.FIRE WATCH offers twenty four (24) fire watch crews for standby services to marine and movie industry, including private functions and concerts.

Our fully equipped fire engine and Skid unit and fully equipped Fire Engine is designed to combat fires as a first line of attack.





PERSONAL PROTECTIVE EQUIPMENT



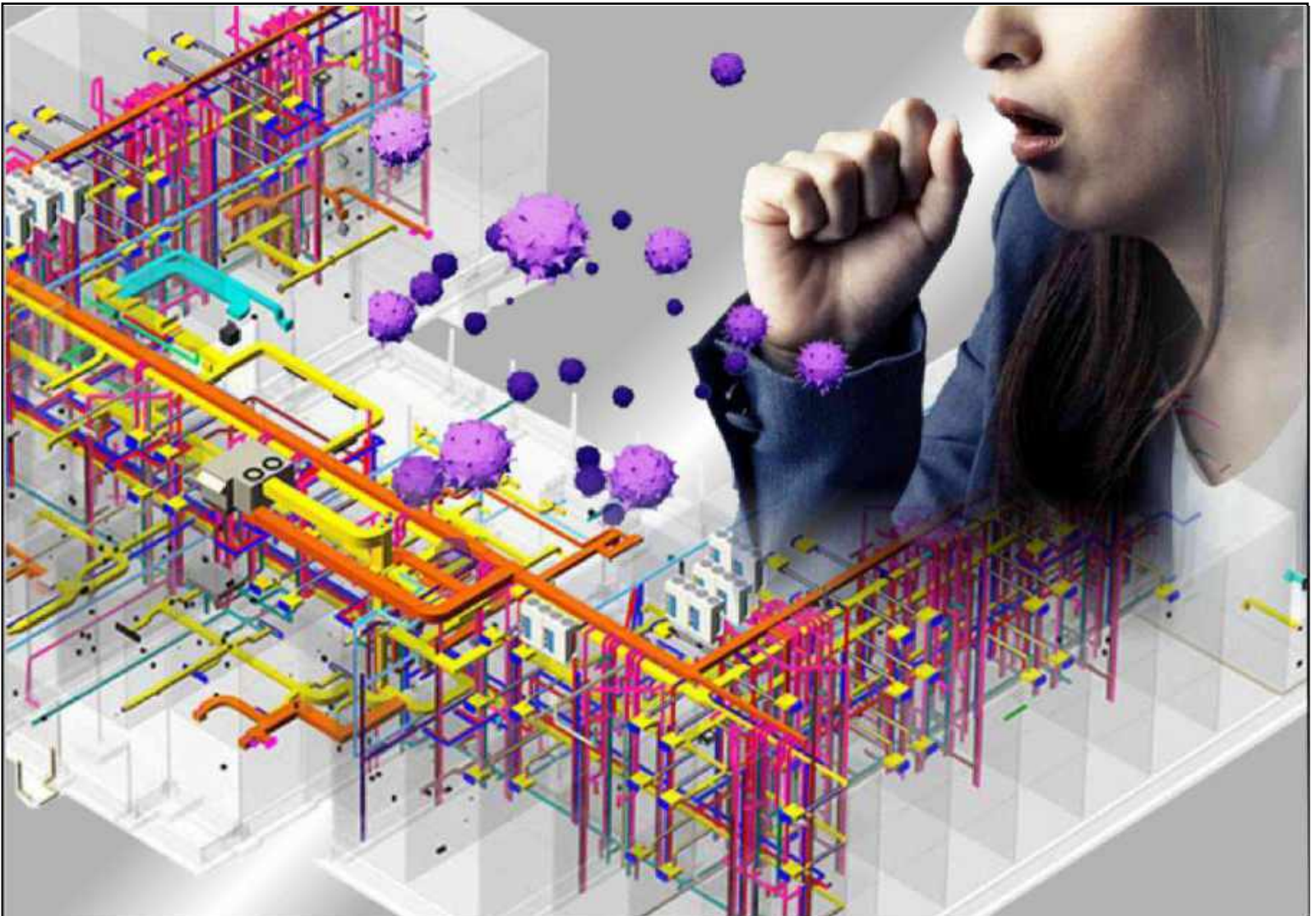
Personal Protective Equipment



S.A.FIRE WATCH (PTY) LTD is committed to protecting men and women exposed to risks in all types of industries and work environments.

It is this commitment that drives us to offer our clients high quality equipment to meet the wide variety of workers' safety needs





HVAC

Heat, Ventilation & Air Conditioning

At S.A. Fire Watch, we will ensure that our HVAC systems installed are not only financially attractive but also comfortable to your occupants while being energy efficient in operation and environmentally caring. Our HVAC systems are operationally flexible, and so fully capable of sustaining mini-environments on a floor-by-floor or zone-by-zone basis,

even in small and medium-sized buildings. S.A. Fire Watch works towards implementing your building structural MEPF as per council approved and South Africa regulatory framework of both SANS 10400-XA: 2011 for the building standards and SANS 204:2008 for the energy consumption standards.



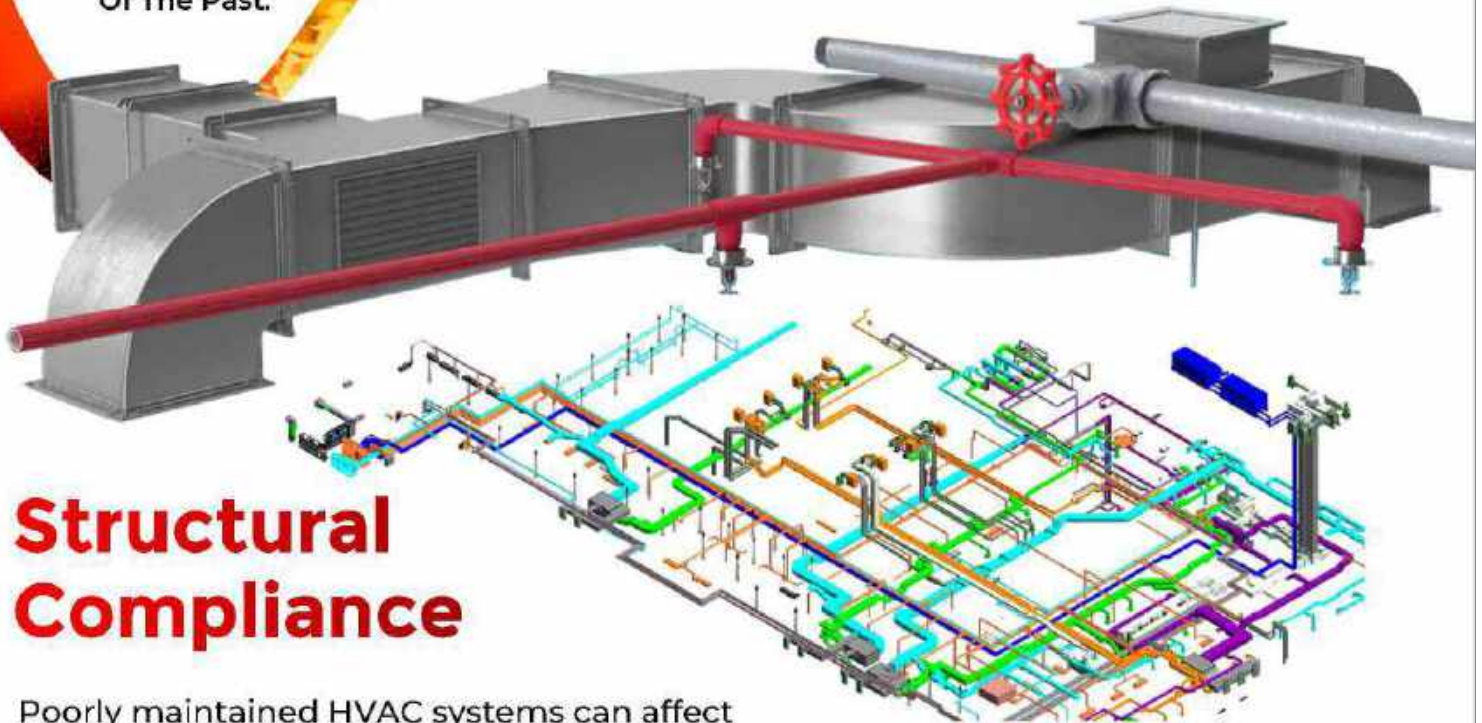
HVAC

Heat, Ventilation & Air Conditioning

S.A. Fire Watch Will Incorporate The Inbuilt MEPF Flexibility Necessary To Cope With Future Changes In Demand Or Use Patterns, Avoiding Any Potential Problems With Large-scale Alterations, Inherent In The Less Flexible Systems Of The Past.

Installation

S.A. Fire Watch assists in drawing up a precise MEPF specification for the environmental services requirement with considerations not excluding: Property age if existing, operational flexibility, content and location of the space, patterns of occupancy, building usage in hours per day, and compliance with evolving environmental legislation. This information enables S.A. Fire Watch team to devise the optimum air conditioning specification.



Structural Compliance

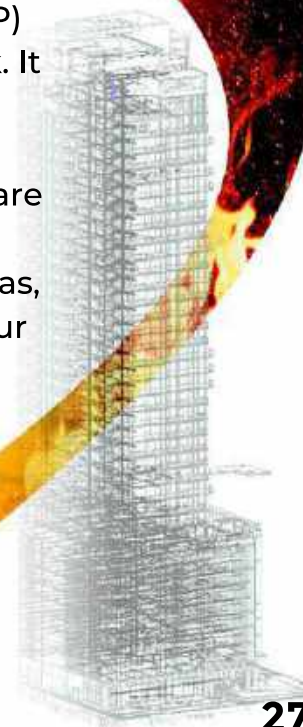
Poorly maintained HVAC systems can affect your electricity consumption up by 30% Well maintained and serviced HVACs systems also contributing to the depreciation of walls fixtures and painting if by form of pipe leakages. Regular servicing, inspection and maintenance should not be seen as a cost addition, but more of a value addition to sustain the integrity of the building thereby maintaining structural compliance.





CCTV Systems

An IP CCTV (Closed-Circuit Television) system is a type of surveillance system that uses internet protocol (IP) technology to transmit video signals over a network. It consists of IP cameras, network switches, recording devices, and software that allows for remote monitoring and management of the system. There are many types of IP cameras available from dome cameras, bullet cameras, PTZ (pan-tilt-zoom) cameras, and thermal cameras. This can be customized to your requirements.

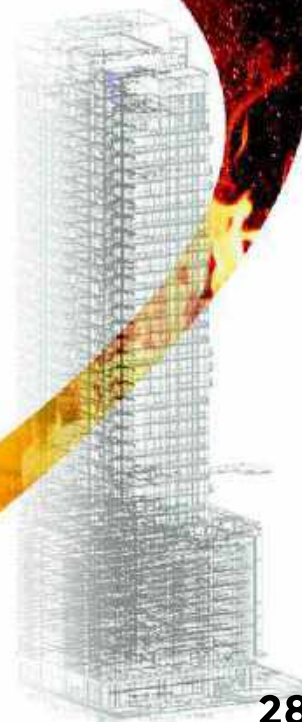




Alarm Systems

S.A. Fire Watch alarm systems provide early detection of even slow smoldering fires and can be configured to detect intruders, smoke and heat. This alarm system is integrated with a panel that caters for both fire and security.

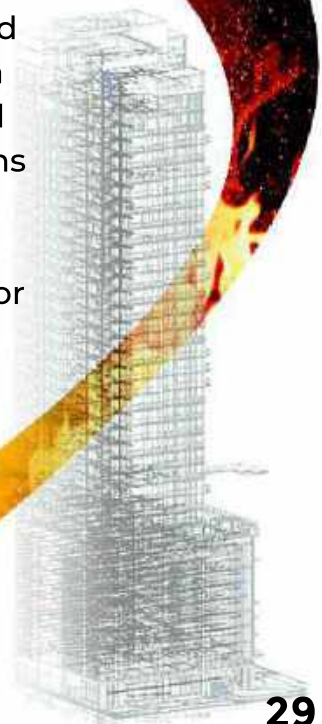
This work in an all-round applicable panel that have a single control centre. Our Alarms can be configured to meet your specific needs.





Access Control Systems

S.A. Fire Watch access control security solutions provide you with a system to control all entry and exit points throughout your premises. We offer a range of stand-alone access control systems and large managed systems, All our security solutions are built to suit your needs whilst offering future scalability. Our systems can integrate with intrusion detection systems, CCTV systems, visitor management systems, HR systems, and many more applications.



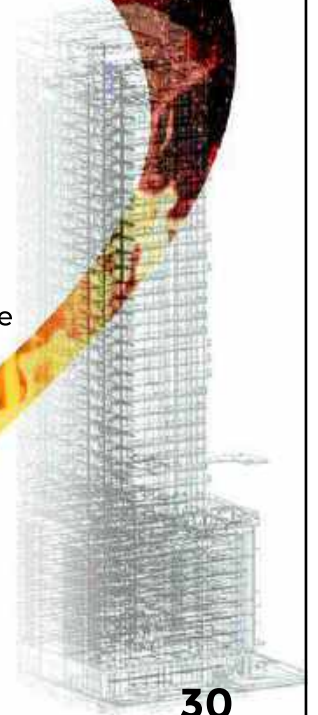


Green Action for Fire Safety

Current climatic conditions suggest that this position will be inevitable in the future of the fire safety industry.

SA Fire Watch will recruit within the current employees the new role of Sustainability and Development Manager. The primary responsibility of the role will be to inform, recommend, and design green fire safety and compliance installations.

The position of Sustainability and Development Manager will see to the implementation of S.A. Fire Watch future growth of Green fire safety which will require sound inputs on water management and suppression systems.





Corporate Social Responsibility Program

Proud contributor to



Saartjie Baartman Centre
FOR WOMEN & CHILDREN



SA Fire Watch, Schools Fire and Safety Training Program, has implemented reduction measures for hazardous gas and smoke emissions while training, by constructing a mobile fire training simulator, that will be going to all schools in South Africa to offer free fire training



Accreditations



labour

Department:
Labour
REPUBLIC OF SOUTH AFRICA



Transport Education Training Authority
Heart of Skills Innovation





Focus On Flame Retarding of fabrics in Public Venues



Our retardants are biologically degradable, free of halogen compounds; AOX negative and free of heavy metals. Public assembly areas such as theatres, exhibitions, conference centres, boardrooms, restaurant,

hotels, AirBnB, casinos or any space used for any public venue are required to maintain compliance with fire codes. We provide a **certificate of flame retardancy** which states that the materials are flame retarded.



Project Experience Some Of Our Clients



GROWTH-POINT
PROPERTIES



Project Experience Some Of Our Clients



GROWTH-POINT
PROPERTIES



CORPORATE PROFILE



SA FIRE WATCH
Fire and Safety Compliance



CONTACT US:



021 7035 **911** or 021 7036 **911**



Ottery Youth Care Centre,
175 Plantation Road, Ottery



info@safirewatch.co.za



www.safirewatch.co.za

